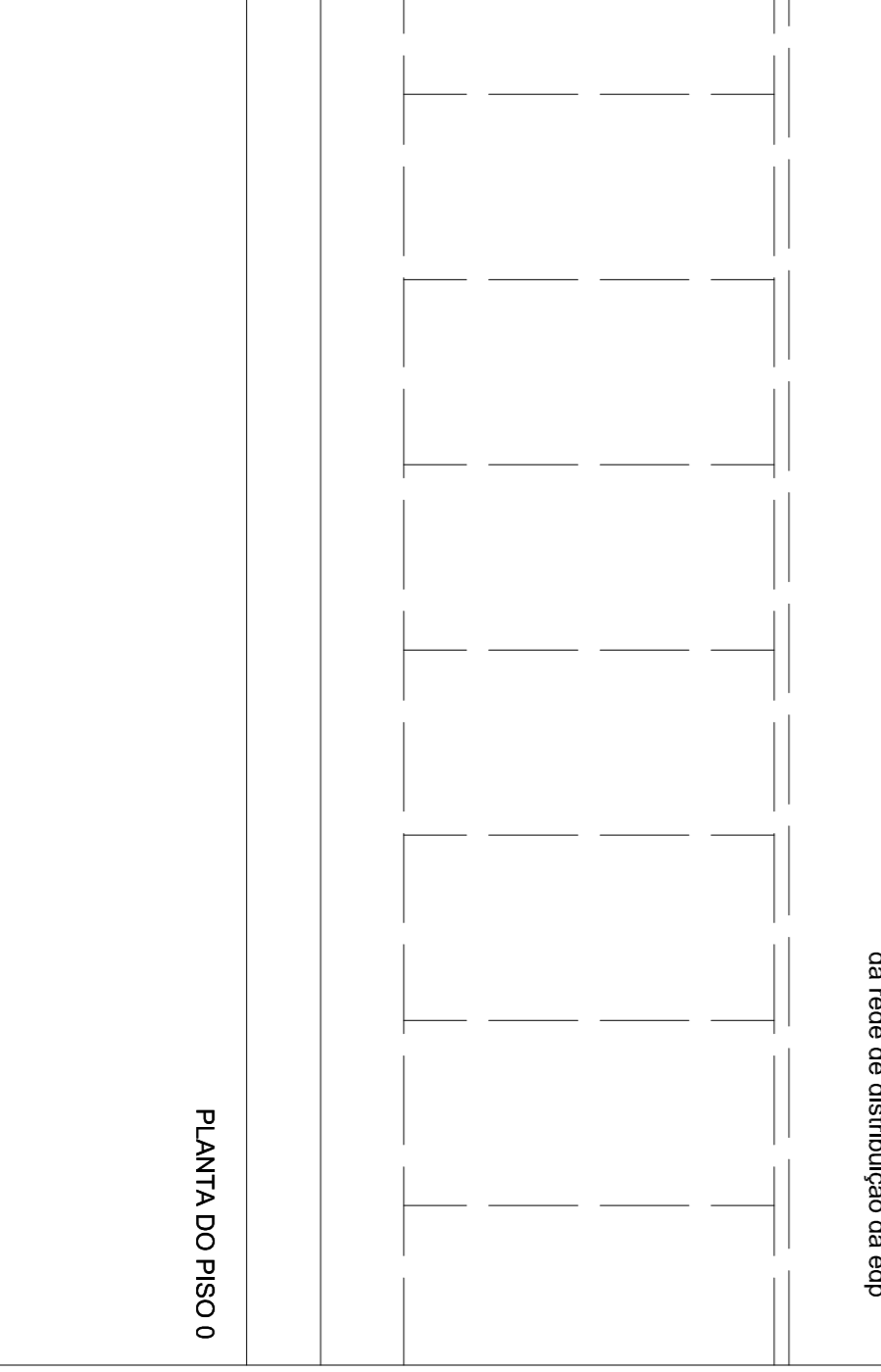
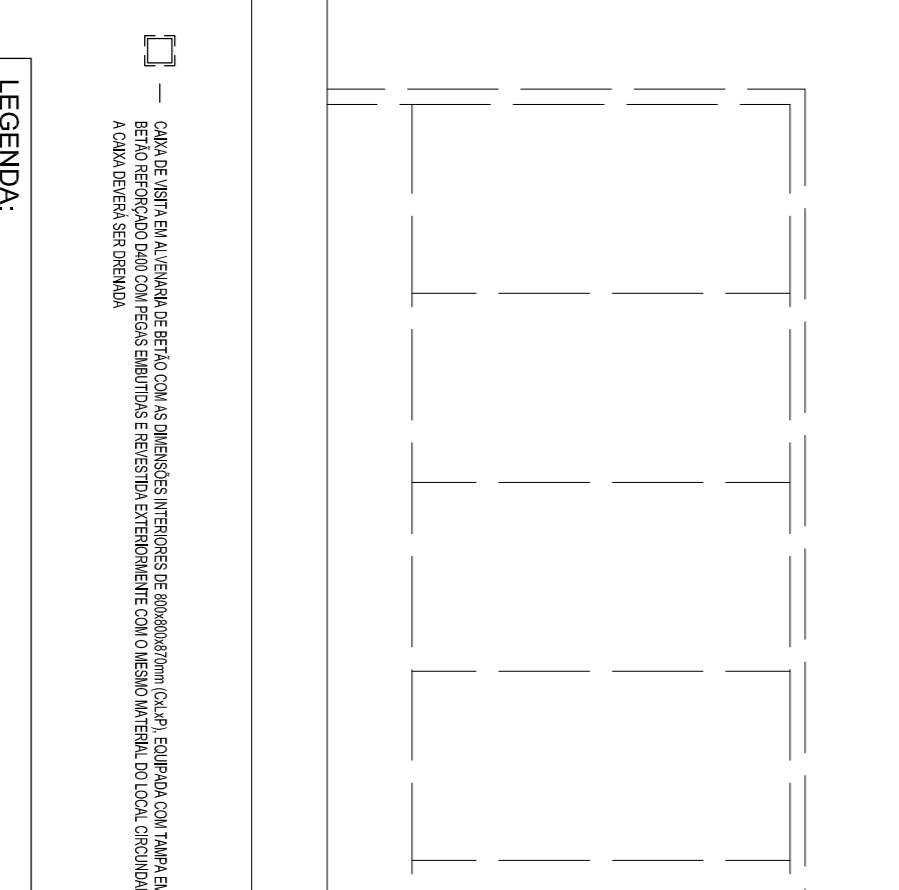
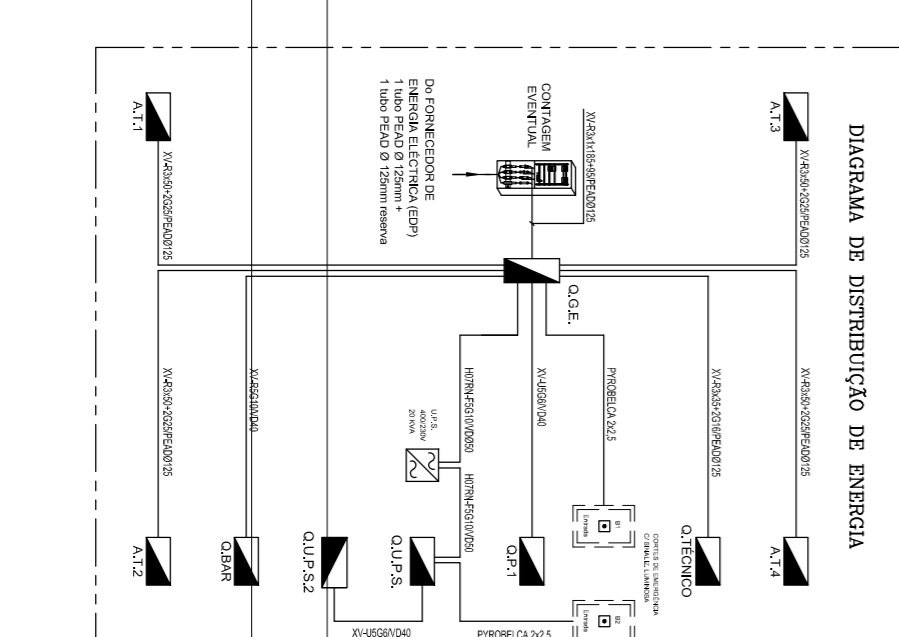
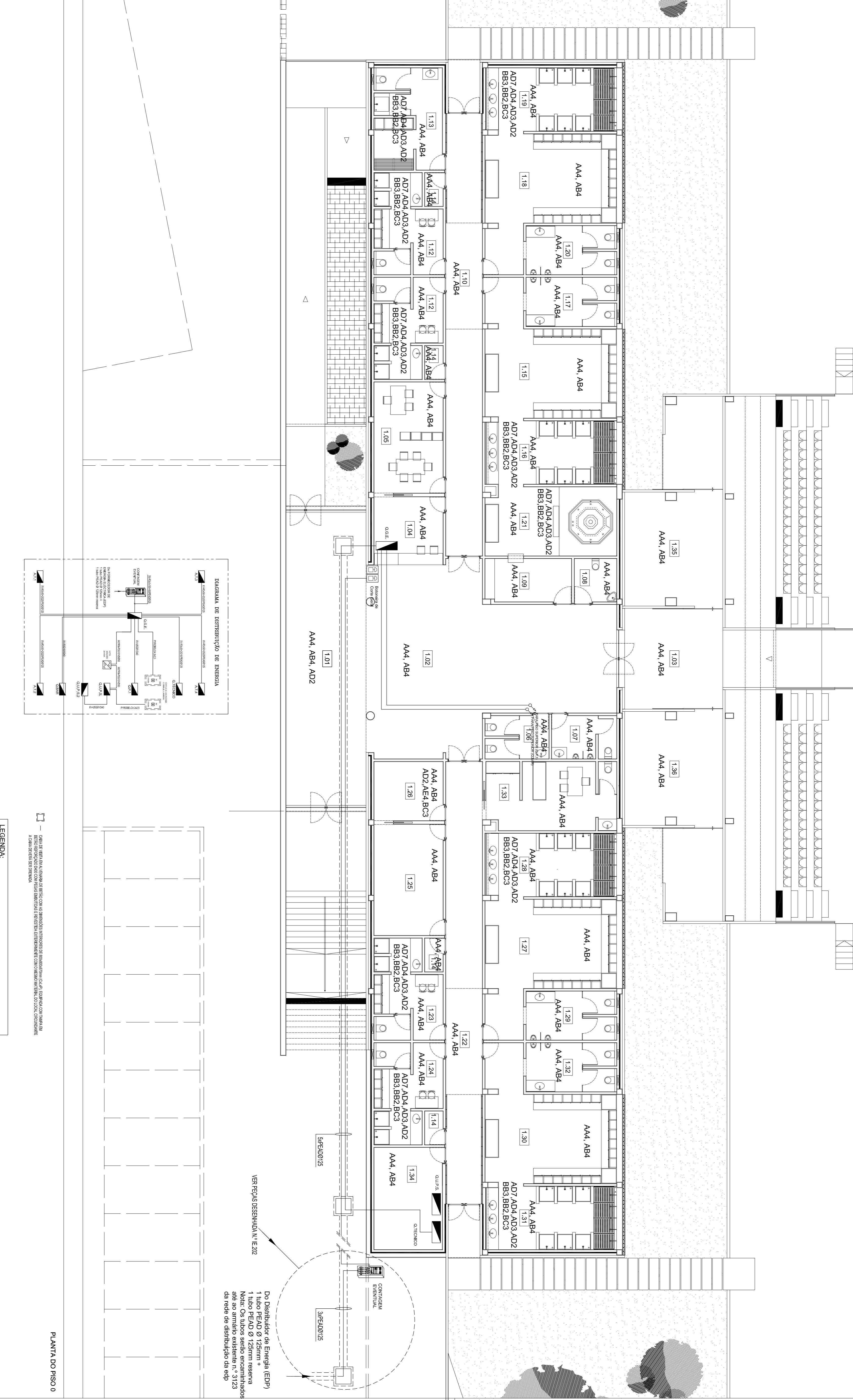


LEGENDA:

Table with 2 columns: Symbol/Code and Description. Includes items like 1.00 - ÁREA BRUTA DE CONSTRUÇÃO, 1.01 - ÁREA ÚTIL, 1.02 - ÁREA DE COBERTURA, etc.

Table with 2 columns: Symbol/Code and Description. Includes items like 1.17 - NETS SANITÁRIOS PAVIMENTADOS, 1.18 - SANITÁRIOS PAVIMENTADOS, etc.

Project information block including 'CAMARÁ MUNICIPAL DE VIMOSO', 'AVENIDA DE ALCANCES - VIMOSO', 'ALBERTO JOSÉ CASTRO', and 'COMPLEXO DESPORTIVO DE VIMOSO'. Includes logos for Galego & Martins, Engenharia, and GM.



Do Distribuidor de Energia (EDP) 1 tubo PENAD Ø 125mm + 1 tubo PENAD Ø 125mm reserva Nota: Os tubos serão encaminhados até ao armário existente n.º 3123 da rede de distribuição da edp

PLANTA DO PISO 0